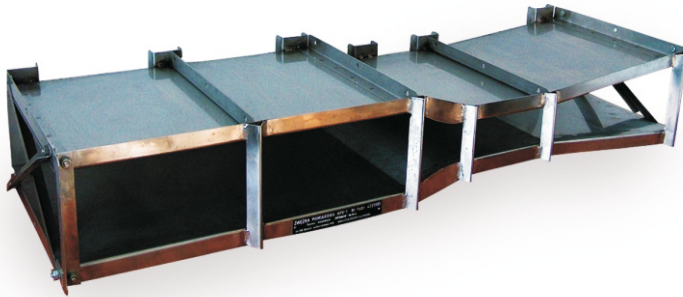


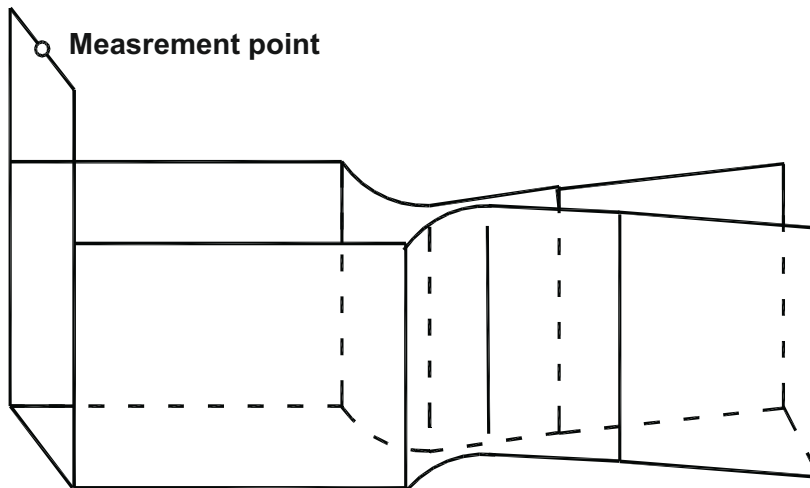
VENTURI TUBES KPV



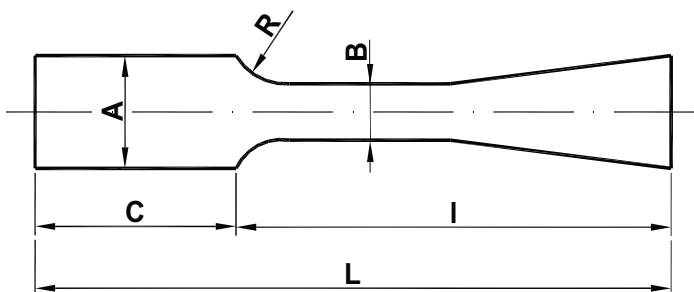
Venturi tubes are used for volume measurement of flow rate in open canals, within the range to 5040 m³/h. There are 9 types of Venturi tubes with symbols KPV-I...KPV-IX.

CONSTRUCTION

Tubes are made of acidproof sheet # 2mm. Tube is stiffened by ribs (holes in ribs must be used for stabilization of tube in building time). Measurement of height of liquid level in Venturi tube and converting this on flow rate value and counting this flow is realized with the aid of ultrasonic measuring set or canal flowmeter.



Top View





TECHNICAL DATES

Parameters	Q	A	B	H	I	C	L
	m ³ /h	mm	mm	mm	mm	mm	mm
KPV – I	4 ÷ 70	150	75	400	675	600	1275
KPV – II	20 ÷ 180	200	100	600	900	600	1500
KPV – III	70 ÷ 360	300	150	700	1350	600	1950
KPV – IV	70 ÷ 540	400	200	700	1800	600	2400
KPV – V	65 ÷ 720	500	250	800	2300	1000	3300
KPV – VI	75 ÷ 1190	600	300	900	2700	1000	3700
KPV – VII	530 ÷ 2120	800	400	1200	3600	1200	4800
KPV – VIII	385 ÷ 3530	1000	500	1500	4500	2000	6500
KPV - IX	252 ÷ 5040	1200	600	1500	5400	2250	7650